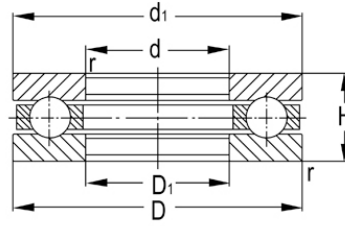


## 51200 Series



Designation	Principal Dimensions(mm)			Basic Load Ratings(KN)		Limited Speed(rpm)		Weight (kg)
	d	D	T	Dynamic(Cr)	Static(Cor)	Grease	Oil	
51203	17	35	12	17	27.2	4500	6300	0.048
51204	20	40	14	22.2	37.5	3800	5300	0.075
51205	25	47	15	27.8	50.5	3400	4800	0.11
51206	30	52	16	28	54.2	3200	4500	0.13
51207	35	62	18	39.2	78.2	2800	4000	0.21
51208	40	68	19	47	98.2	2400	3600	0.26
51209	45	73	20	47.8	105	2200	3400	0.3
51210	50	78	22	48.5	112	2000	3200	0.37
51211	55	90	25	67.5	158	1900	3000	0.58
51212	60	95	26	73.5	178	1800	2800	0.66
51213	65	100	27	74.8	188	1700	2600	0.72
51214	70	105	27	73.5	188	1600	2400	0.75
51215	75	110	27	74.8	198	1500	2200	0.82
51216	80	115	28	83.8	222	1400	2000	0.9
51217	85	125	31	102	280	1300	1900	1.21
51218	90	135	35	115	315	1200	1800	1.65
51220	100	150	38	132	375	1100	1700	2.21
51222	110	160	38	138	412	1000	1600	2.39