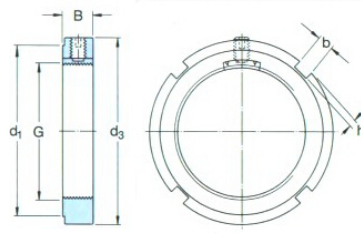
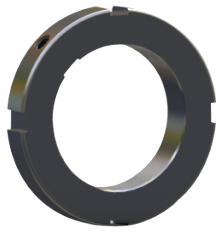


KMK lock nut with inner locking pin



Lock nut	Designation	Sunk screw (Nm)		Dimensions(mm)						Nuts required for dismounting	Breakout torque(Nm)	Weight kg
		Appropriate hook spanners	Advised breakout torque	G	d1	d3	B	b	h			
KMK0	-	M5	4	M 10×0,75	16	20	9	3	2	9,8	6	0,016
KMK1	HN1	M5	4	M 12×1	18	22	9	3	2	11,8	9	0,018
KMK2	HN2	M5	4	M 15×1	21	25	9	4	2	14,6	12	0,021
KMK3	HN3	M5	4	M 17×1	24	28	9	4	2	19,6	13	0,027
KMK4	HN4	M5	4	M 20×1	28	32	9	4	2	24	16	0,030
KMK5	HN5	M5	4	M 25×1,5	34	38	9	5	2	31,5	29	0,030
KMK6	HN6	M5	4	M 30×1,5	41	45	9	5	2	36,5	35	0,060
KMK7	HN7	M5	4	M 35×1,5	48	52	9	5	2	50	40	0,070
KMK8	HN8	M6	8	M 40×1,5	53	58	11	6	2,5	62	67	0,11
KMK9	HN9	M6	8	M 45×1,5	60	65	11	6	2,5	78	76	0,14
KMK10	HN10	M6	8	M 50×1,5	65	70	13	6	2,5	91,5	84	0,18
KMK11	HN11	M8	18	M 55×2	69	75	13	7	3	91,5	172	0,19
KMK12	HN12	M8	18	M 60×2	74	80	13	7	3	95	188	0,20
KMK13	HN13	M8	18	M 65×2	79	85	14	7	3	108	203	0,24
KMK14	HN14	M8	18	M 70×2	85	92	14	8	3,5	118	219	0,28
KMK15	HN15	M8	18	M 75×2	91	98	14	8	3,5	134	235	0,33
KMK16	HN16	M8	18	M 80×2	98	105	18	8	3,5	173	378	0,45
KMK17	HN17	M10	35	M 85×2	103	110	18	8	3,5	190	401	0,52
KMK18	HN18	M10	35	M 90×2	112	120	18	10	4	216	425	0,65
KMK19	HN19	M10	35	M 95×2	117	125	20	10	4	236	448	0,76
KMK20	HN20	M10	35	M 100×2	122	130	20	10	4	255	472	0,80